



## Health and Wellbeing Board Thursday 16<sup>th</sup> November 2017

### CHILDREN'S TRUST: ACE APPROACH BRIEFING

Responsible Officer Karen Bradshaw

Email: karen.bradshaw@shropshire.gov.uk Tel: 01743 254201

---

#### 1.0 Summary

This regular update briefing commissioned by the Health and Wellbeing Board (H&WBB) from the Shropshire Children's Trust will focus on the action plan for the 0 – 25 SEND Strategic Board and asks the H&WBB to play a key role in embedding the Adverse Childhood Experiences (A.C.E) approach across Shropshire. This briefing provides assurance to the H&WBB on the work of the Trust and highlights areas for closer consideration by the H&WBB.

#### 2.0 Recommendations

The H&WBB is recommended to note the information and updates in this report and :

- a) Ensure that the needs of children and young people with SEND are taken into consideration across all health and wellbeing development work
- b) Work with the Children's Trust to ensure partners sat around the H&WBB table embed the ACE approach using routine enquiry within the assessments they already undertake
- c) Use appropriate opportunities to encourage:
  - the people of Shropshire that we have a responsibility for our own health and ensuring that we look after our mental health
  - Shropshire communities to continue to develop their own way to support individuals and groups in improving their wellbeing and resilience
  - parents to recognise the impact that their approach to parenting has on their children as they grow up

### REPORT

#### 3.0 Risk Assessment and Opportunities Appraisal

The Children's Trust through its associated health and wellbeing outcomes supports the reduction of inequalities across Shropshire

#### 4.0 Financial Implications

No financial decisions are explicitly required with this report, there may be associated resource implications to be considered for some actions.

#### 5.0 Background

This update briefing provides the Health and Wellbeing Board with regular assurance from the Children's Trust concerning the partnership approach to promoting and supporting the health and wellbeing of children, young people and families in Shropshire.

#### 6.0 0 – 25 Special Educational Needs and Disabilities (SEND) Strategic Board

- 6.1 As a sub group of the Children's Trust the 0 – 25 SEND Strategic Board takes the lead on our partnership work to embed the changes of the SEND reforms and to continuously look to improve outcomes for children and young people living with special educational needs and / or disabilities.

6.2 The 0 – 25 SEND Strategic Board has recently agreed action plans to ensure that;

- Shropshire Children and young people living with Special Educational Needs and/or Disabilities, and their families and carers, feel empowered and in control of their lives
- Shropshire Children and young people living with Special Educational Needs and/or Disabilities, and their families and carers, feel safe and supported appropriately whatever their age (0 - 25) and wherever they are.

6.3 Three workstreams have been identified and are to be co chaired by representatives of Shropshire Council, Shropshire Clinical Commissioning Group (CCG), Public Health and the Shropshire Parent and Carer Council (PACC):

- Communications & Participation Workstream
- Joint Commissioning & Service Delivery Workstream
- Quaity, Performance & Finance Workstream

6.4 The high level action plans are attached as appendix A for your information

6.5 We would ask the H&WBB to assist our whole system approach and encourage partners to ensure that the needs of children and young people with SEND are taken into consideration across all health and wellbeing development work.

## 7.0 Why we should be embedding the ACE approach in Shropshire

7.1 The Children's Trust has regularly provided information to the H&WBB about the adverse childhood experience (ACE) approach. The work to embed the ACE approach across Shropshire continues not simply to ensure we have healthy children but *to help as many people as possible live long, happy and productive lives by promoting health and wellbeing at all stages of life.* (H&WBB Strategy 2016-2021).

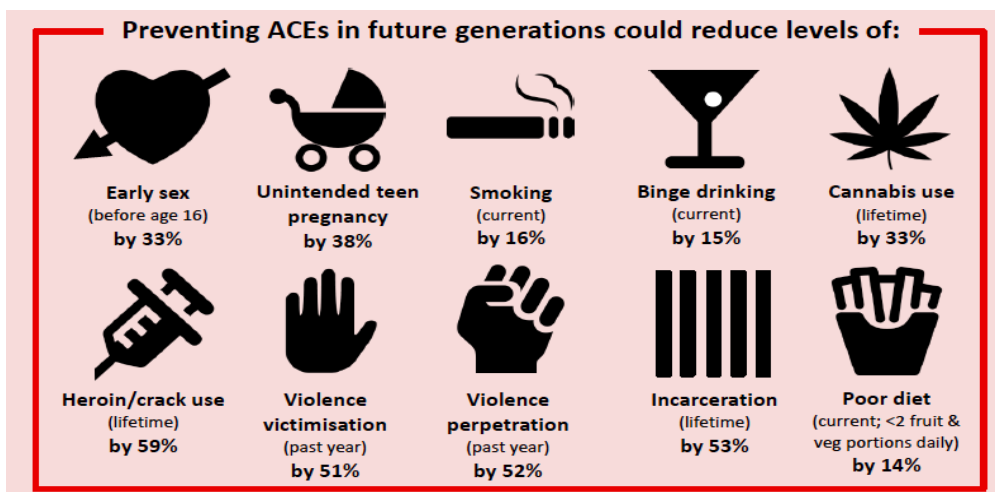
7.2 By working together to identify those people who have experienced multiple childhood traumas, and ensuring appropriate support is in place much earlier, services will be better placed to support individuals and we can break the negative cycle of intergenerational issues.

7.3 This is not a long report that seeks to identify the impact of every action or inaction. It provides the headlines:

- to spur each partner sat around the H&WBB table into action to embed the ACE approach using routine enquiry within the assessments they already undertake
- to remind everyone reading it that we have a responsibility for our own health and ensuring that we look after our mental health
- to encourage Shropshire communities to continue to develop their own way to support individuals and groups in improving their wellbeing and resilience
- to encourage parents to recognise the impact that their approach to parenting has on their children as they grow up



7.4 The statistics to support why the Children’s Trust is endorsing the use of the ACE approach are evidenced in the Public Health England graphic below.



7.5 So why should it be so important for the Children’s Trust and the Health and Wellbeing Board to work together to ensure that the ACE approach is embedded in the core of the work we do across Shropshire? Not simply focussed on those children who may need extra support today but for those adults who have experienced adverse childhood experiences that have impacted on their adult lives.

7.6 The answer is also a simple one... if we do not recognise and address those needs **today**, and ensure we build resilience in children and assist those adults in identifying coping strategies to help them thrive not simply survive, then **tomorrow** the impact of inaction will see some Shropshire residents ill equipped to deal with life challenges and an increased financial burden to the partners of the Shropshire H&WBB to support their needs.

<b>List of Background Papers (This MUST be completed for all reports, but does not include items containing exempt or confidential information)</b>
Children’s Trust Report to H&WBB May 2017
<b>Cabinet Member (Portfolio Holder)</b>
Nick Bardsley
<b>Local Member</b>
<b>Appendices</b>
<b>Appendix A 0 – 25 SEND Strategic Partnership Board Workstream Action Plans</b>